



Workshop: Applied Survey Data Analysis

**University of Kentucky
March 30, 2013**

Content

- **Introduction**

Mark Peffley, Professor, Department of Political Science and Director and QIPSR

Arnold Stromberg, Chair, Department of Statistics and Co-Director, Applied Statistics Lab (ASL)

- **Module 1: Introduction to Sampling Methods**

Abby Córdova, Assistant Professor, Department of Political Science
Dominique Zéphyr, Data Analyst, Applied Statistics Lab (ASL)

- **Module 2: Variance estimation**

Arnold Stromberg, Chair, Department of Statistics and Co-Director, Applied Statistics Lab (ASL)

- **Module 3: Analysis of Survey Data using Stata**

Dominique Zéphyr, Data Analyst, Applied Statistics Lab (ASL)

Today's Schedule

9:15 AM

Coffee and Welcome (Gatton Lobby)

Introduction (B&E, 313)

9:30 AM

- Mark Peffley, Professor, Department of Political Science and Director and QIPSR
- Arnold Stromberg, Chair, Department of Statistics and Co-Director, Applied Statistics Lab (ASL)

Introduction to Sampling Techniques: Simple Random Samples versus Complex Samples

10:00 AM

- Abby Córdova, Assistant Professor, Department of Political Science
- Dominique Zéphyr, Data Analyst, Applied Statistics Lab (ASL)

10:45 AM

Coffee Break

Variance Estimation Techniques

11:00 AM

- Arnold Stromberg, Chair, Department of Statistics and Co-Director, Applied Statistics Lab (ASL)

12:00 PM

Lunch Break

Analysis of Complex Survey Data using Stata (Computer Lab, B&E, 105)

1:00-2:30 PM

- Dominique Zéphyr, Data Analyst, Applied Statistics Lab (ASL)

Software Workshops:

R, Stata, SAS, SPSS, MatLab, and ArcGIS.

2- or 3-day Statistical Workshops in May:

- “Spatial Regression Analysis” Paul Voss (May 2011)
- “Multilevel Modeling (MLM) Using Stata” Brandon Bartels (May 2011)
- “Missing Data and Applied Solutions” Fred Boehmke (May 2012)

Grant Workshops:

- "An Insider's Guide to Social Science Grants" Janice Almasi, Tom Janoski, Jim Ziliak Matthew Webster, Lawrence Gottlob, Anna Secor, Margot McCullers (February 2011)
- "Writing Successful NSF Dissertation Improvement Grants" Tom Janoski, Michael Samers, Emily Beaulieu (October 2011)
- “Grant-Writing Basics” Proposal Development Office (February 2012)

Statistical Workshops on Automated Text Analysis:

- "Automated Content Analysis for Social Scientists" Daniel Hopkins (March 2011)
- "Using TABARI, Text & Event Data Analysis " Phil Schrodt (November 2011)
- "How Censorship Allows Government Criticism but Silences Collective Expression" Gary King (April 2012)
- "Computer-Assisted Clustering and Conceptualization from Unstructured Text" Gary King (April 2012)

Annual Interdisciplinary Conferences

- “Immigration Policy in an Anti-Immigrant Era” (March 2011)
- “Rising Economic Inequality in the 21st Century” (March 2012)
- “The Polarized Electorate” (December 2012)

Other Statistical Workshops

- "New Directions in the Study of Political Geography" Demonstration of GIS software” James Gimpel (December 2010)
- "Voter Migration and the Geographic Sorting of the American Electorate" James Gimpel (December 2010)
- "How the News Shapes Perceptions of the Economy" Yanna Krupnikov (October 2011)
- "Seven Deadly Sins of Contemporary Quantitative Political Analysis" Phil Schrodt (November 2011)
- “Matching Methods for Causal Inference” Gary King (April 2012)

- 3 day workshop on **Applied Multilevel Models for Longitudinal and Clustered Data**, by Lesa Hoffman, **May 14-16**.
- Applied examples will be based on Stata, but software syntax for all examples provided in SAS, SPSS, too.



Applied Statistics Lab

UNIVERSITY OF KENTUCKY
COLLEGE OF ARTS & SCIENCES

[UK](#) [A&S](#) [Directory](#) [Log in](#)



DEPARTMENT OF STATISTICS

[About](#) ▾

[Graduate Program](#) ▾

[People Directory](#) ▾

[Seminars](#)

[Alumni & Friends](#) ▾

Applied Statistics Laboratory

Share this page: [✉](#) [f](#) [t](#)

How Does the Consultation Process Work?

ASL

SUBMIT A REQUEST.

STEP 1: x □ □

Applied Statistics Laboratory

- ▶ [ASL Consultation](#)
- ▶ [Help](#)
- ▶ [ASL Directory](#)
- ▶ [ASL News & Events](#)
- [FAQ](#)



Dean's Channel with Prof. Bathke
and Prof. Stromberg, Statistics



quantitative initiative for
policy and social research



Applied Statistics Lab

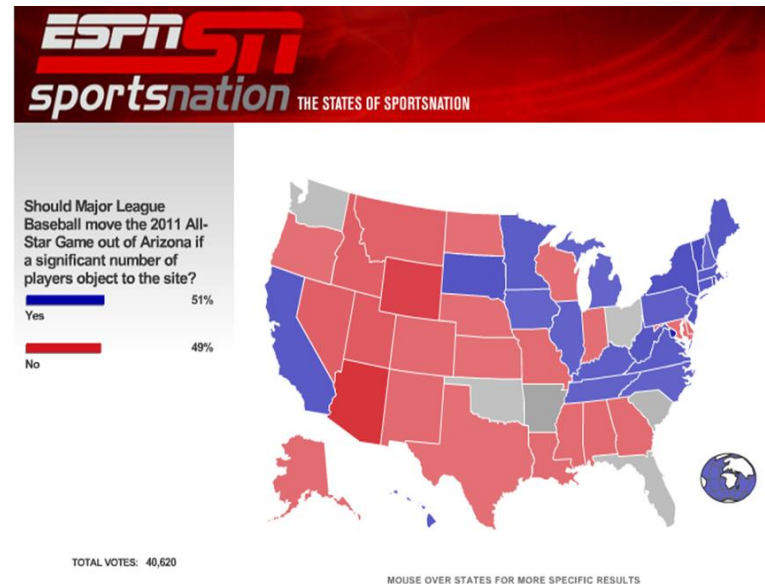
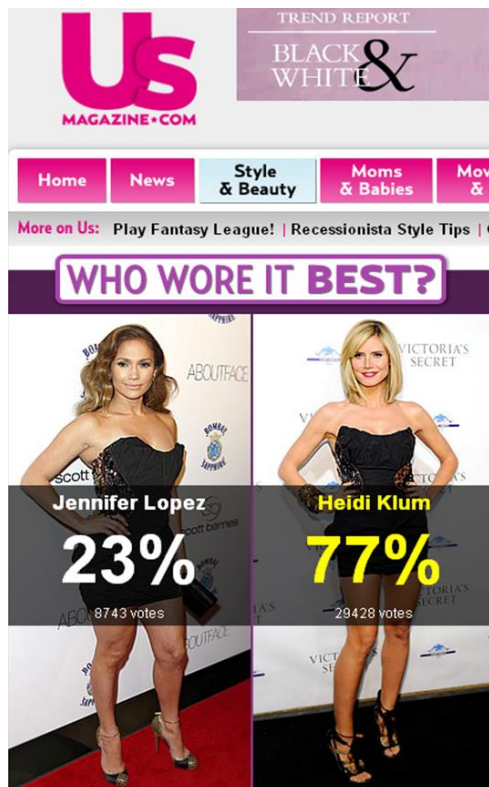
Another name for this workshop: “Survey Analysis: The Missing Manual”

- And most of us **think** we know what we’re doing when analyzing survey data, but as we’ll find out today that is probably not true.
- Personal goals:
 - I will know what I don’t know about survey analysis.
 - I will be able to use Stata’s “Survey Data Reference Manual” for something other than a door stop.



Transformation of Survey Research in the Last 15 Years

- Decline in landline phones & the rise of Internet surveys
- When will you find “Applied Survey Data Analysis” most relevant?
 - SLOP surveys? No.



Other Surveys?

- Other surveys
 - Survey Monkey, Qualtrics surveys to email addresses?
 - Mechanical Turk surveys: \$.50/survey through Amazon?
 - Internet panel opt-in surveys: CCES (QIPSR)?
 - Knowledge Networks: maybe
- **Gold standard surveys:**
 - General Social Survey (Sociology)
 - American National Election Studies (Political Science)
 - World Values Surveys